



# Plant flowers

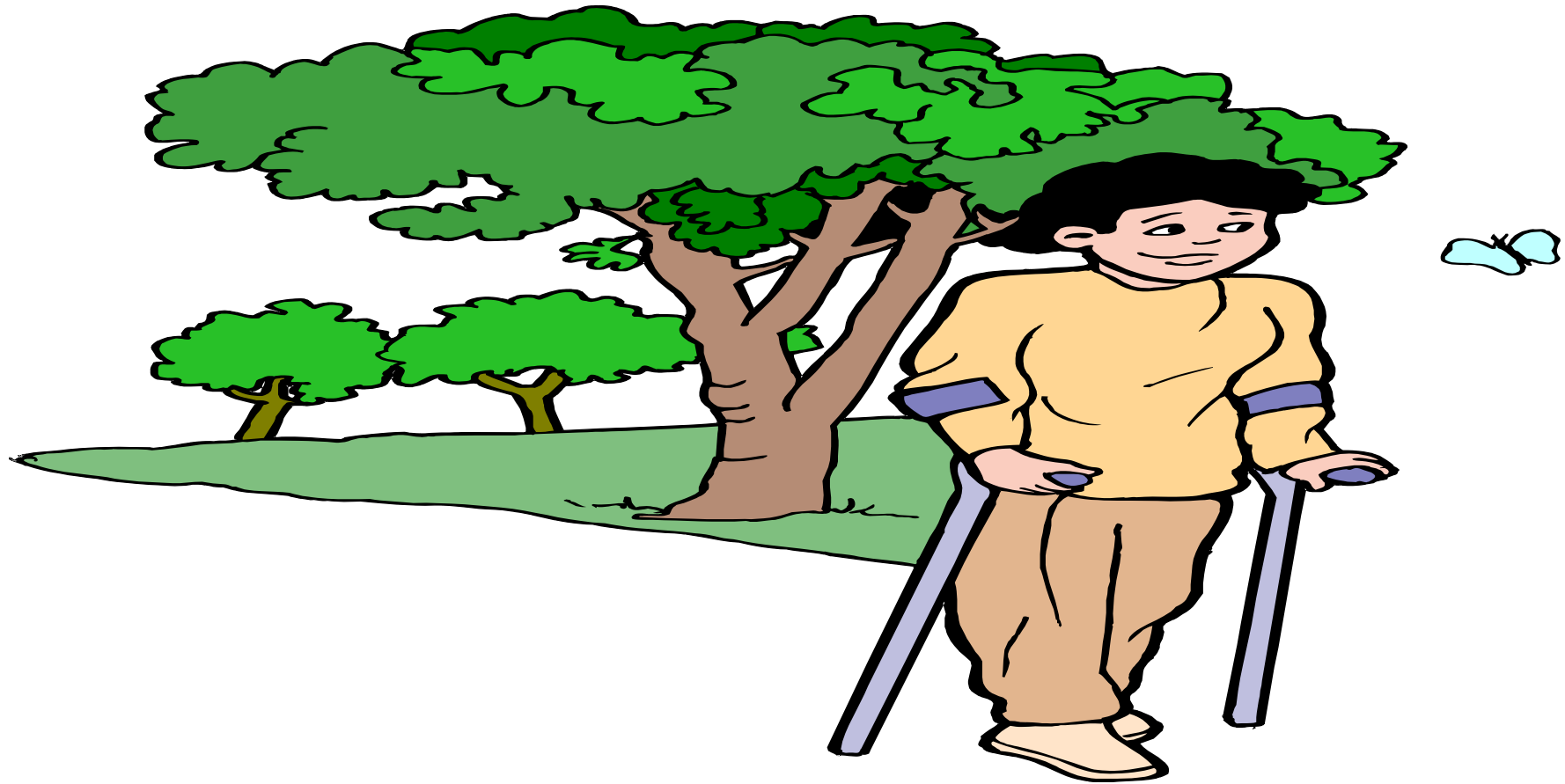
Copyright © 2012 [www.eslpuzzles.com](http://www.eslpuzzles.com)



**ESL Puzzles**

ESL Materials for Teachers & Students





Go to the park

Copyright © 2012 [www.eslpuzzles.com](http://www.eslpuzzles.com)



**ESL Puzzles**

ESL Materials for Teachers & Students





Eat ice cream

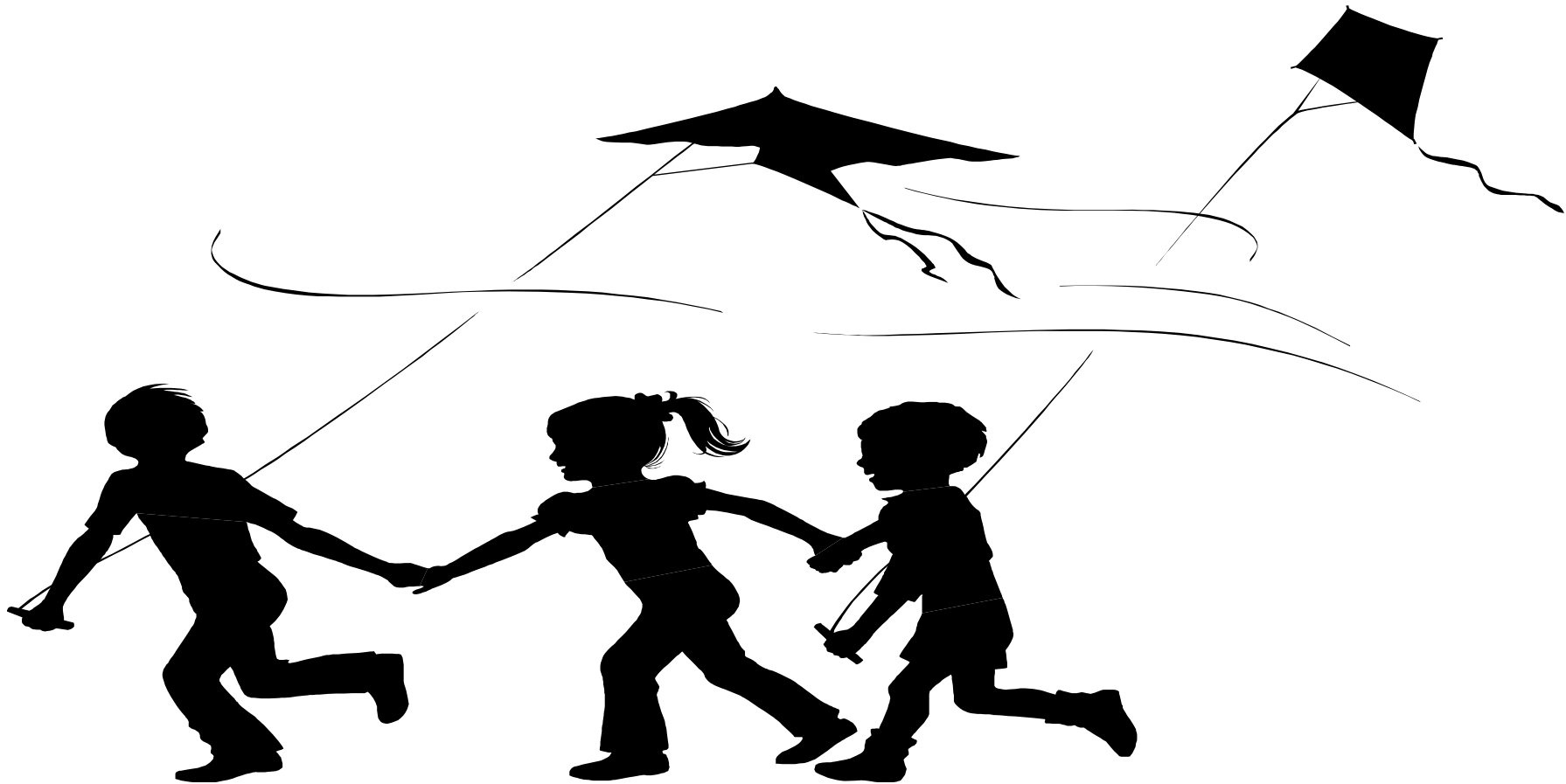
Copyright © 2012 [www.eslpuzzles.com](http://www.eslpuzzles.com)



**ESL Puzzles**

ESL Materials for Teachers & Students





# Fly kites

Copyright © 2012 [www.eslpuzzles.com](http://www.eslpuzzles.com)



**ESL Puzzles**

ESL Materials for Teachers & Students





# Go hiking

Copyright © 2012 [www.eslpuzzles.com](http://www.eslpuzzles.com)



**ESL Puzzles**

ESL Materials for Teachers & Students





# Go snowboarding

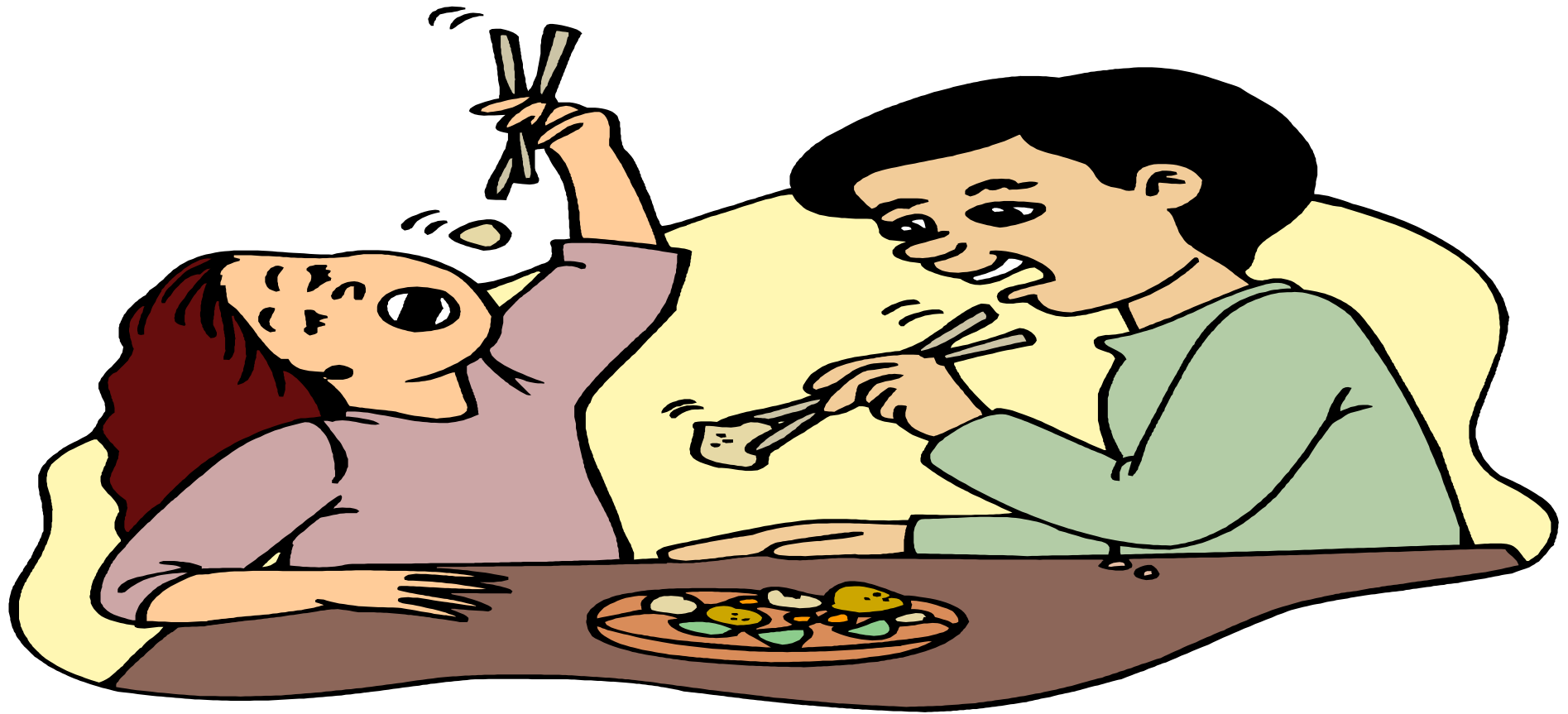
Copyright © 2012 [www.eslpuzzles.com](http://www.eslpuzzles.com)



**ESL Puzzles**

ESL Materials for Teachers & Students





# Eat dumplings

Copyright © 2012 [www.eslpuzzles.com](http://www.eslpuzzles.com)



**ESL Puzzles**

ESL Materials for Teachers & Students





# Go swimming

Copyright © 2012 [www.eslpuzzles.com](http://www.eslpuzzles.com)



**ESL Puzzles**

ESL Materials for Teachers & Students







# Read a book

Copyright © 2012 [www.eslpuzzles.com](http://www.eslpuzzles.com)



**ESL Puzzles**

ESL Materials for Teachers & Students

