



# Silver

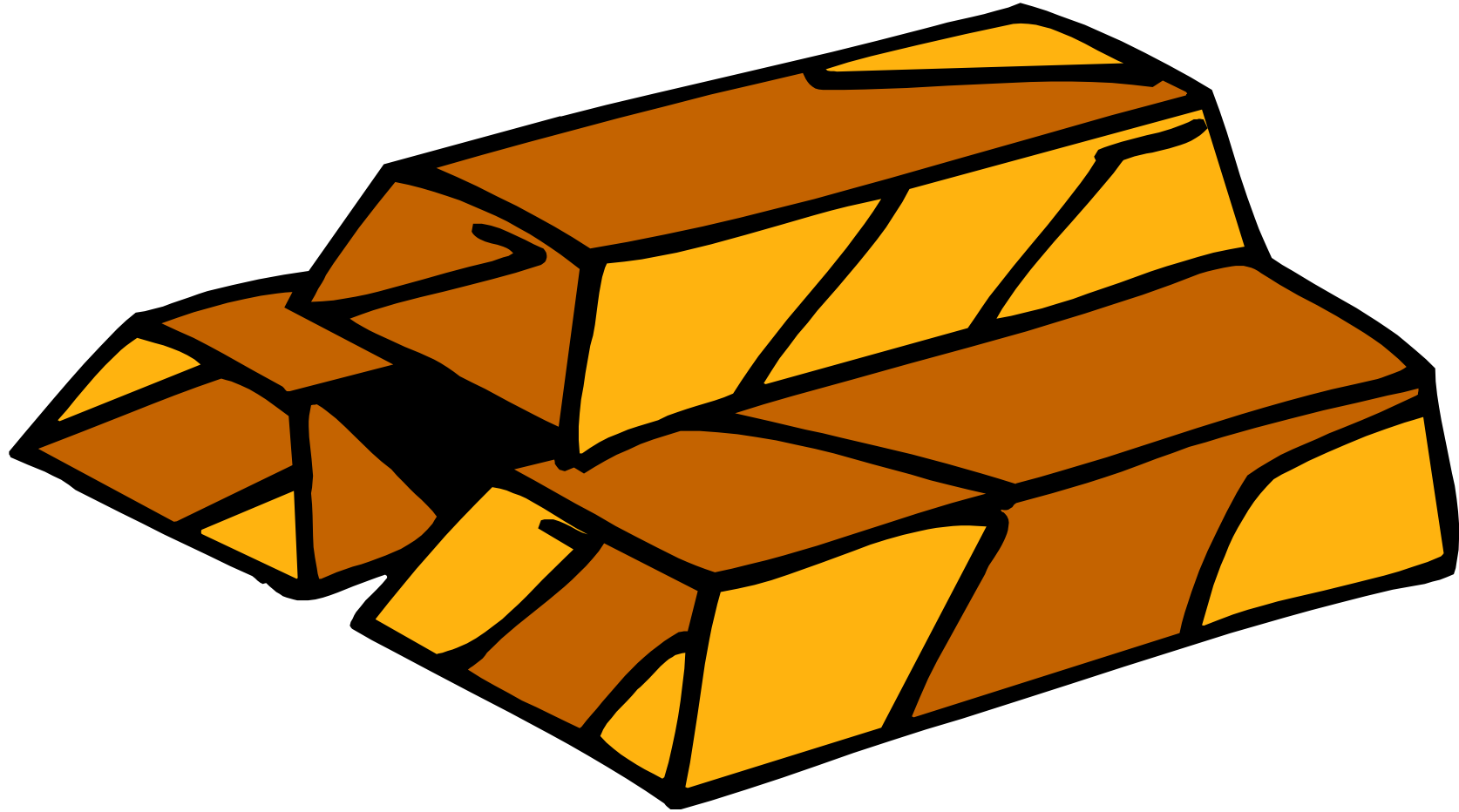
Copyright © 2012 [www.eslpuzzles.com](http://www.eslpuzzles.com)



**ESL Puzzles**



ESL Materials for Teachers & Students



Gold

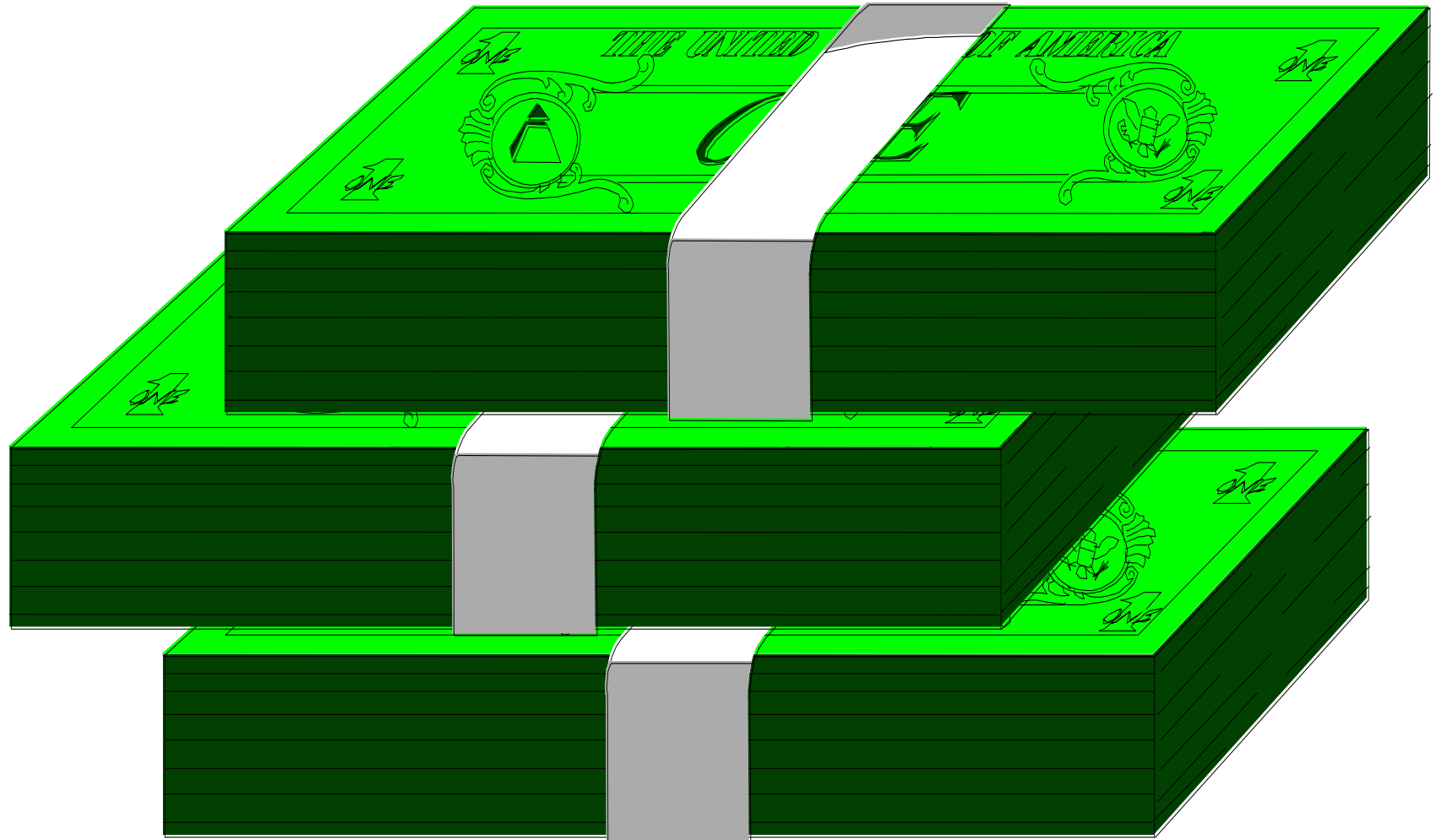
Copyright © 2012 [www.eslpuzzles.com](http://www.eslpuzzles.com)



**ESL Puzzles**

ESL Materials for Teachers & Students





# Paper money

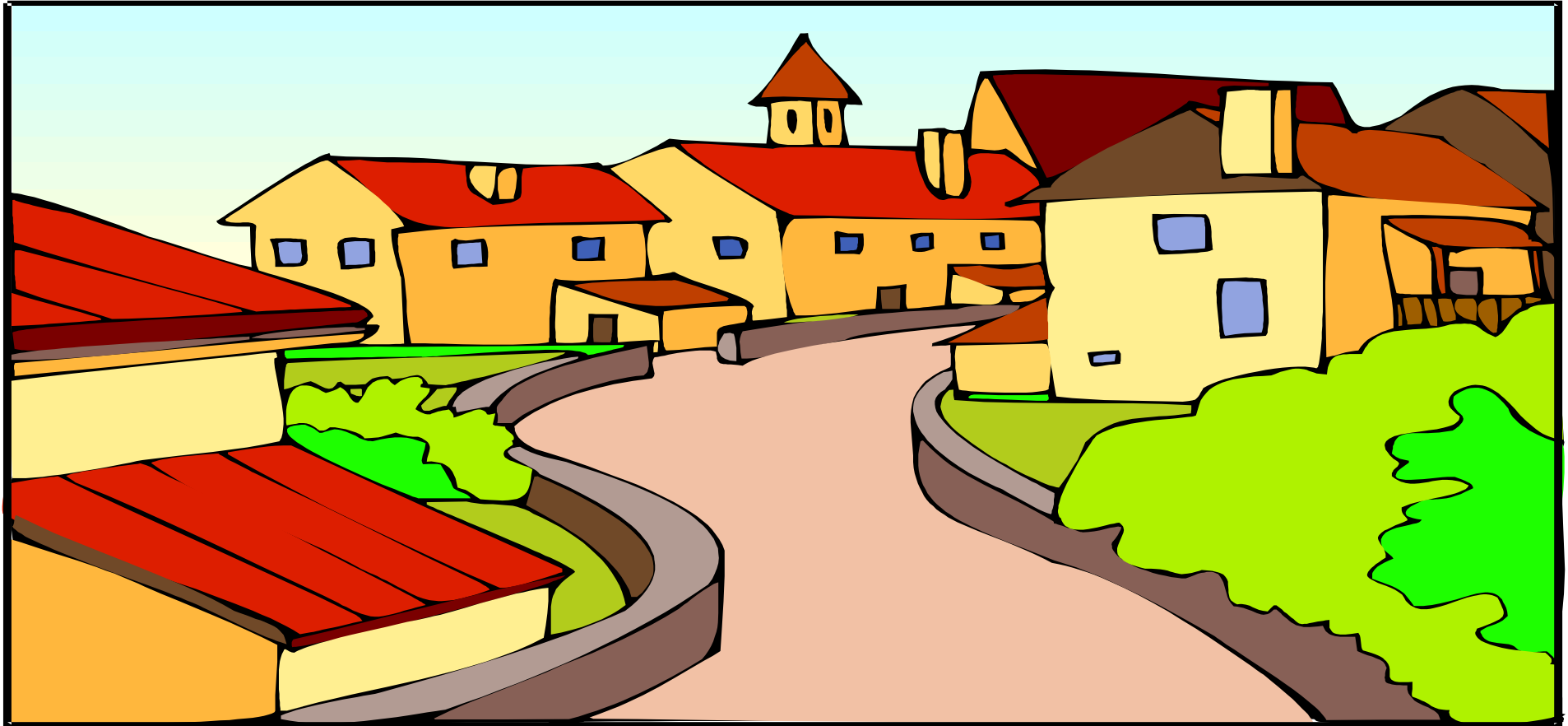
Copyright © 2012 [www.eslpuzzles.com](http://www.eslpuzzles.com)



**ESL Puzzles**

ESL Materials for Teachers & Students





# Town

Copyright © 2012 [www.eslpuzzles.com](http://www.eslpuzzles.com)



**ESL Puzzles**

ESL Materials for Teachers & Students





# Village

Copyright © 2012 [www.eslpuzzles.com](http://www.eslpuzzles.com)



**ESL Puzzles**

ESL Materials for Teachers & Students





# Silk clothes

Copyright © 2012 [www.eslpuzzles.com](http://www.eslpuzzles.com)

**ESL Puzzles**  
ESL Materials for Teachers & Students

The logo for ESL Puzzles features the words 'PUZZLES' and 'ESL' in a stylized font, with puzzle pieces forming the letters. The logo is repeated on both sides of the central text.



# Cotton clothes

Copyright © 2012 [www.eslpuzzles.com](http://www.eslpuzzles.com)



**ESL Puzzles**

ESL Materials for Teachers & Students





# Carriage

Copyright © 2012 [www.eslpuzzles.com](http://www.eslpuzzles.com)

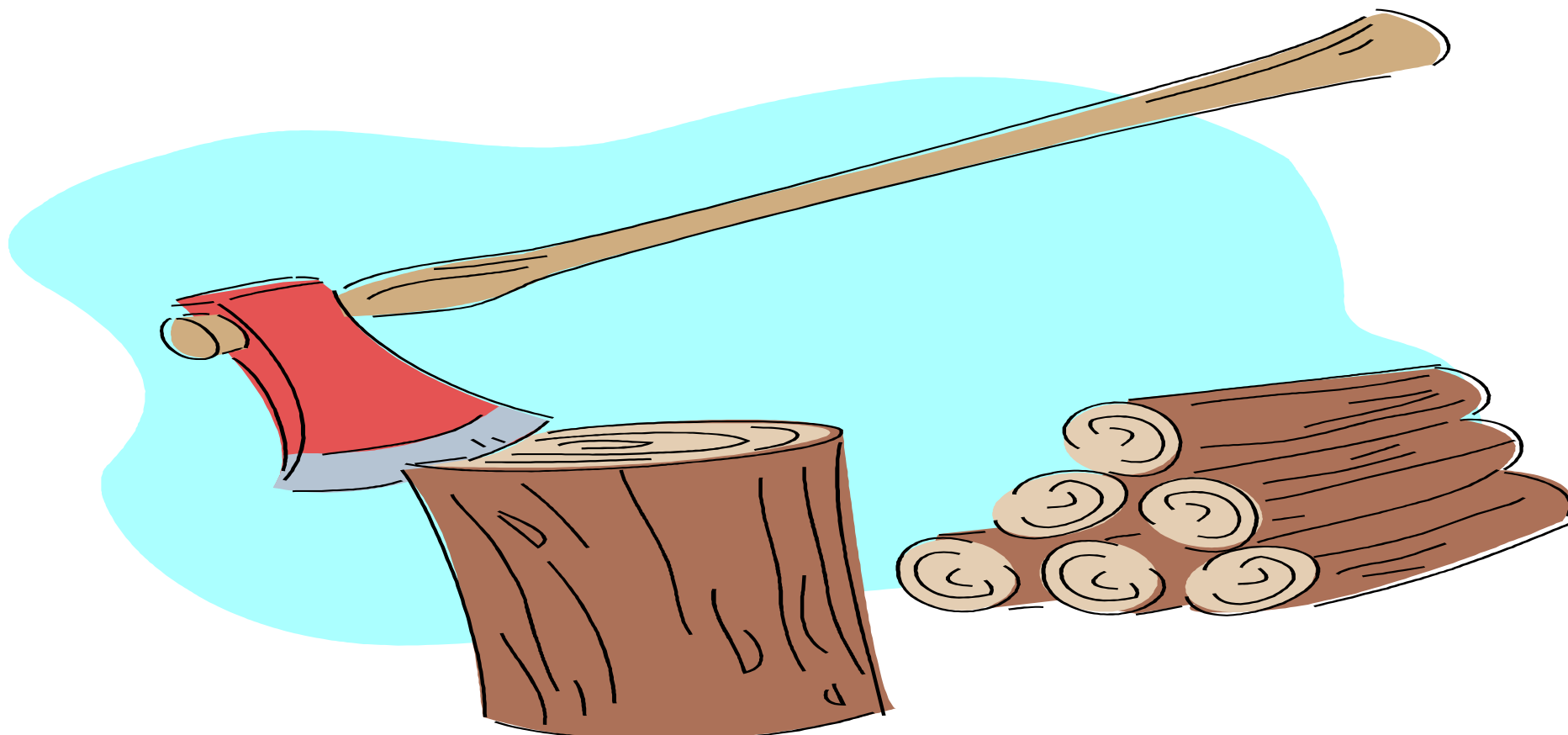


**ESL Puzzles**

ESL Materials for Teachers & Students







# Firewood

Copyright © 2012 [www.eslpuzzles.com](http://www.eslpuzzles.com)

**ESL Puzzles**  
ESL Materials for Teachers & Students

The logo for ESL Puzzles features the words 'PUZZLES' and 'ESL' arranged in a crossword puzzle grid pattern on both sides of the main text.



# Horse

Copyright © 2012 [www.eslpuzzles.com](http://www.eslpuzzles.com)



**ESL Puzzles**

ESL Materials for Teachers & Students

